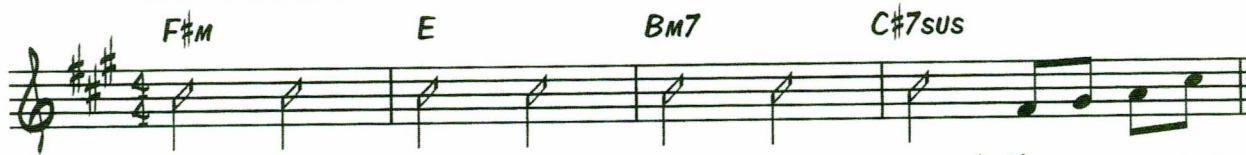


MARY, DID YOU KNOW?

WORDS AND MUSIC BY
MARK LOWRY
AND BUDDY GREENE

WITH REFLECTION ♩ = 100



1. MAR-Y DID YOU



KNOW THAT YOUR BA - BY BOY_ WOULD ONE DAY WALK_ ON WA -
(2.) KNOW THAT YOUR BA - BY BOY_ WILL GIVE SIGHT TO_ THE BLIND_
(3.) KNOW THAT YOUR BA - BY BOY_ IS LORD OF ALL_ CRE - A -



- TER? MAR-Y, DID YOU KNOW THAT YOUR BA - BY BOY_ WOULD
MAN? MAR-Y, DID YOU KNOW THAT YOUR BA - BY BOY_ WOULD
- TION? MAR-Y, DID YOU KNOW THAT YOUR BA - BY BOY_ WILL



SAVE OUR SONS_ AND DAUGH - TERS? DID YOU KNOW THAT YOUR
CALM A STORM_ WITH HIS_ HAND? DID YOU KNOW THAT YOUR
ONE DAY RULE_ THE NA - TIONS? DID YOU KNOW THAT YOUR



BA - BY BOY_ HAS COME TO MAKE_ YOU NEW;_ THIS_
BA - BY BOY_ HAS WALKED WHERE AN - GELS TROD,_ AND WHEN YOU
BA - BY BOY_ WAS HEAV - EN'S PER - FECT LAMB,_ AND THE


To CODA 

Bm7 *C#sus*



CHILD THAT YOU DE - LIV - ERED WILL SOON DE - LIV - ER ____
 KISS YOUR LIT - TLE BA - BY YOU'VE KISSED THE FACE OF ____
 SLEEP - ING CHILD YOU'RE HOLD - ING IS THE

1. *C#* 2. *C#* *F#m*



YOU? 2. MAR - Y, DID YOU GOD? OH MAR - Y, DID YOU KNOW?

BRIDGE

F#m/E *D* *E*



THE BLIND WILL SEE, _ THE DEAF WILL HEAR, _ THE

F#m *E* *D* *Bm7*





DEAD WILL LIVE _ A - GAIN, _ THE LAME WILL LEAP, _ THE

C#sus *C#* *F#m*



DUMB WILL SPEAK _ THE PRAIS - ES OF _ THE _

C#sus *C#* D.S.  AL CODA



LAMB. _ 3. MAR - Y, DID YOU

CODA

 *C#sus* *C#* *F#m9* *E* *Bm7* *C#7sus* *C#7* *F#m2*



GREAT I AM?