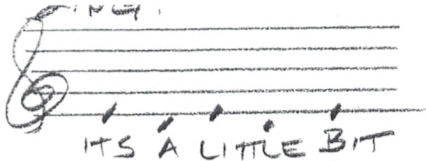


# YOUR SONG, ELTON JOHN



C F G Emin

IT'S A LITTLE BIT FUNNY THIS FEELING INSIDE

Amin Amin/G Amin/F# F

I'M NOT ONE OF THOSE WHO CAN EASILY HIDE

C# G E7\* Amin

I DON'T HAVE MUCH MONEY BUT BOY IF I DID

C Dmin F G

I'D BUY A BIG HOUSE WHERE WE BOTH COULD LIVE

C F G Emin

IF I WAS A SCULPTOR, BUT THEN AGAIN, NO

Amin Amin/G Amin/F# F

OR A MAN WHO MAKES POTIONS IN A TRAVELLING SHOW

C G E7 Amin

I KNOW IT'S NOT MUCH BUT IT'S THE BEST I CAN DO

C Dmin F G

MY GIFT IS MY SONG AND THIS ONE'S FOR YOU

G Amin Dmin F

AND YOU CAN TELL EVERYBODY THIS IS YOUR SONG

G Amin Dmin F

IT MAY BE QUITE SIMPLE BUT NOW THAT IT'S DONE

Amin

I HOPE YOU DON'T MIND

Amin/G Amin/F# F

I HOPE YOU DON'T MIND THAT I PUT DOWN IN WORDS

C Dmin F G

HOW WONDERFUL LIFE IS WHILE YOU'RE IN THE WORLD

C F G E7

I SAT ON THE ROOF AND KICKED OFF THE MOSS

Amin Amin/G Amin/F# F

WELL A FEW OF THE VERSES WELL THEY'VE GOT ME QUITE CROSS

C G E7 Amin

BUT THE SUN'S BEEN QUITE KIND WHILE I WROTE THIS SONG

C Dmin F G

IT'S FOR PEOPLE LIKE YOU THAT KEEP IT TURNED ON

C F G Emin

SO EXCUSE ME FORGETTING BUT THESE THINGS I DO

Amin Amin/G Amin/F# F

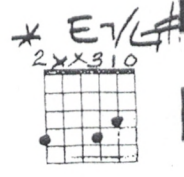
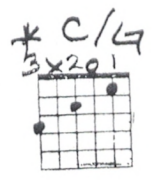
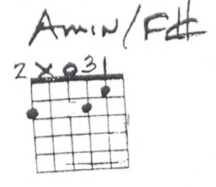
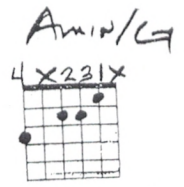
YOU SEE I'VE FORGOTTEN IF THEY'RE GREEN OR THEY'RE BLUE

C G E7 Amin

ANYWAY THE THING IS WHAT I REALLY MEAN

C Dmin F G

YOURS ARE THE SWEETEST EYES I'VE EVER SEEN



} CHORUS

Stream 4 [diagram]