

(I Wonder Why?)

BOOGIEWOOGIE.RU

# You're Just in Love

Medium

from the Stage Production CALL ME MADAM

Words and Music by  
Irving Berlin

V

VERSE

F Ma7

I hear sing - ing and there's no one there.

F Ma7

C7

I smell blos - soms and the trees are bare.

C7

All day long I seem to walk on air, I won - der

C7

F Ma7

G m7

C7

why? I won - der why?

F Ma7

I keep toss - ing in my sleep at night.

F7

B $\flat$ Ma7

And what's more I've lost my ap - pe - tite.

G m7

C7

F Ma7

D7

Stars that used to twin - kle in the skies are twin - kling

G m7

C7

F Ma7

G m7

C7

in my eyes, I won - der why?

CHORUS

**A**

F Ma7

Bb7

F Ma7

Bb7



You don't need an - a - lyz - ing, it is not so sur - pris - ing

F Ma7

Bb7

C7



that you feel ver - y strange — but nice. \_\_\_\_\_

**B**

Gm7

C7

C7

Gm7

C7



Your heart goes pit - ter pat - ter; I know just what's the mat - ter

Gm7

C7

F Ma7

G m7

C7



be - cause I've been there once — or twice. \_\_\_\_\_

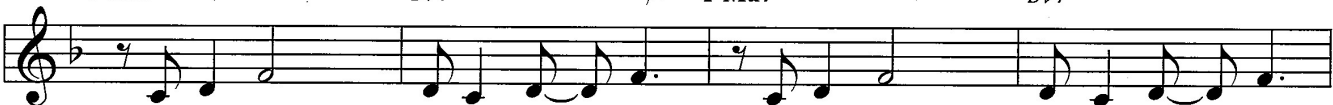
**A<sup>1</sup>**

F Ma7

Bb7

F Ma7

Bb7



Put your head on my shoul - der. You need some - one who's old - er.

F Ma7

C m7

F7

Bb Ma7



A rub - down with a vel - vet glove. \_\_\_\_\_

**C**

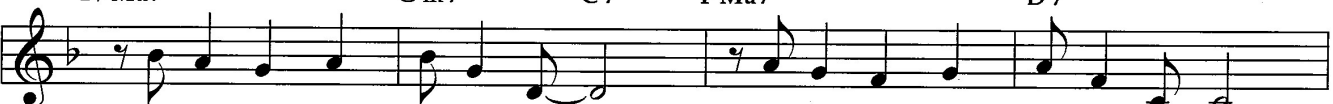
Bb Ma7

G m7

C7

F Ma7

D7



There is noth - ing you can take — to re - lieve this pleas - ant ache. —

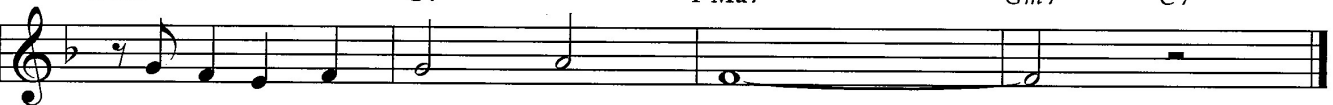
G m7

C7

F Ma7

Gm7

C7



You're not sick, you're just in love. \_\_\_\_\_