

# Ukulele Lady-F- Notes-2 pages

## Ukelele Lady

Friday, August 01, 2014  
2:51 PM



I saw the splen- dor of the moon- light On Hon- o- lu- lu



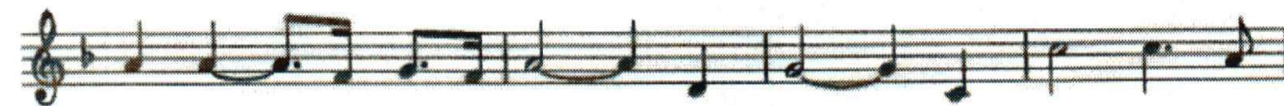
Bay, There's some- thing ten- der in the moon- light. On Hon- o-



lu- lu Bay. And all the bea- ches Are full of pea- ches



Who bring their "ukes" a- long, And in the glim- mer of the



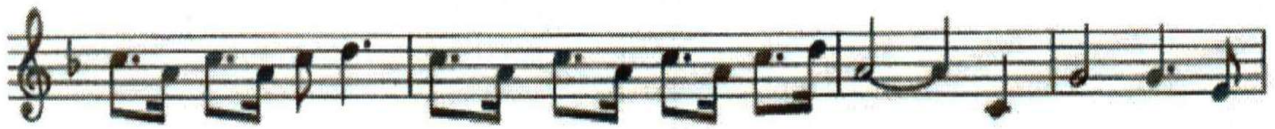
moon- light They love to sing this song; If you like- a



U- ku- le- le La- dy, U- ku- le- le La- dy like- a you. If you like to



lin- ger where it's sha- dy U- ku- le- le La- dy lin- ger too. If you kiss a



U- ku- le- le La- dy While you pro- mise e- ver to be true, And she see a-



no- ther U- ku- le- le La- dy fool a- round with you, May- be she'll sigh,



May- be she'll cry, May- be she'll find some- bo- dy else Bye and



bye to sing to When it's cool and sha- dy Where the tric- ky Wic- ki- Wac- kies



woo, If you like a U- ku- le- le La- dy, U- ku- le- le La- dy like- a you.