

Flute  
Piccolo (optional)

# CAN CAN

from "Orpheus In The Underworld"

by Jacques Offenbach  
arranged by James Christensen

$\text{♩} = 144$

Piccolo (or Fl. 8va)

mf

9

17 To Flute 8

25 (Flute) f

32

40

48

56

64

64

64

Flute - 2

72 To Piccolo 8 (80) (Piccolo) *mf*

88

rit. - - - - -

100 To Flute 6 (Flute) *f*

molto rit. - - - - - accel. - - - - -

108 Tempc I

114 accel. - - - - -

122

130

3

Oboe

# CAN CAN

from "Orpheus In The Underworld"

by Jacques Offenbach  
arranged by James Christensen

$\text{♩} = 144$

*mf*

9

17

*f*

25

32

40

48

56

64

*trill*



72



80

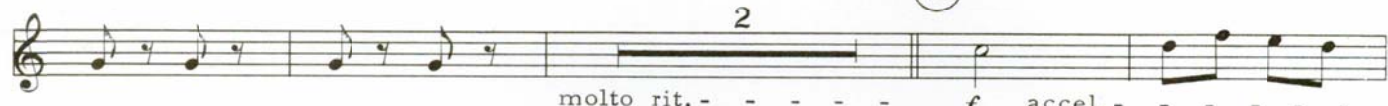


88



rit. - - - - -

100



molto rit. - - - - - f accel. - - - - -



108 Tempo I



114



accel. - - - - -

122



130



B $\flat$  Clarinet

# CAN CAN

from "Orpheus In The Underworld"

by Jacques Offenbach  
arranged by James Christensen

$\text{♩} = 144$

*mf*

9

17

*f*

25

32

40

3

48

56

*ff*

64

72

80

88

100

108 Tempo I

114

122

130

Horn in F

# CAN CAN

from "Orpheus In The Underworld"

by Jacques Offenbach  
arranged by James Christensen

$\text{♩} = 144$   
*mf*

9 17 25 32 40 48 56 64

Horn in F - 2

Musical score for Horn in F - 2, measures 72-130. The score is written in treble clef with a key signature of one sharp (F#). The music consists of ten staves of notation. Measure numbers 72, 80, 88, 100, 103, 114, 122, and 130 are circled. Performance markings include *mf*, *rit.*, *molto rit.*, *f*, *accel.*, and *Tempo I*. A fermata is present over measure 100. A double bar line with a '2' above it is located at the end of measure 99. A fermata is present over measure 122. A triplets marking '3' is present over measures 128-130.



# CAN CAN

Bassoon

from "Orpheus In The Underworld"

by Jacques Offenbach  
arranged by James Christensen

$\text{♩} = 144$

*mf*

9

17

*f*

25

32

3

40

48

56

*ff*

64

Bassoon - 2

72



80



88



rit. - - - - -

molto rit. - - - - -

100



108 Tempo I



114



122



130



3

